



NEW MEXICO  
MUSEUM OF  
NATURAL HISTORY  
& SCIENCE

# Master Planning Charette

April 29, 2021

**Lord**  
Cultural Resources

# Agenda

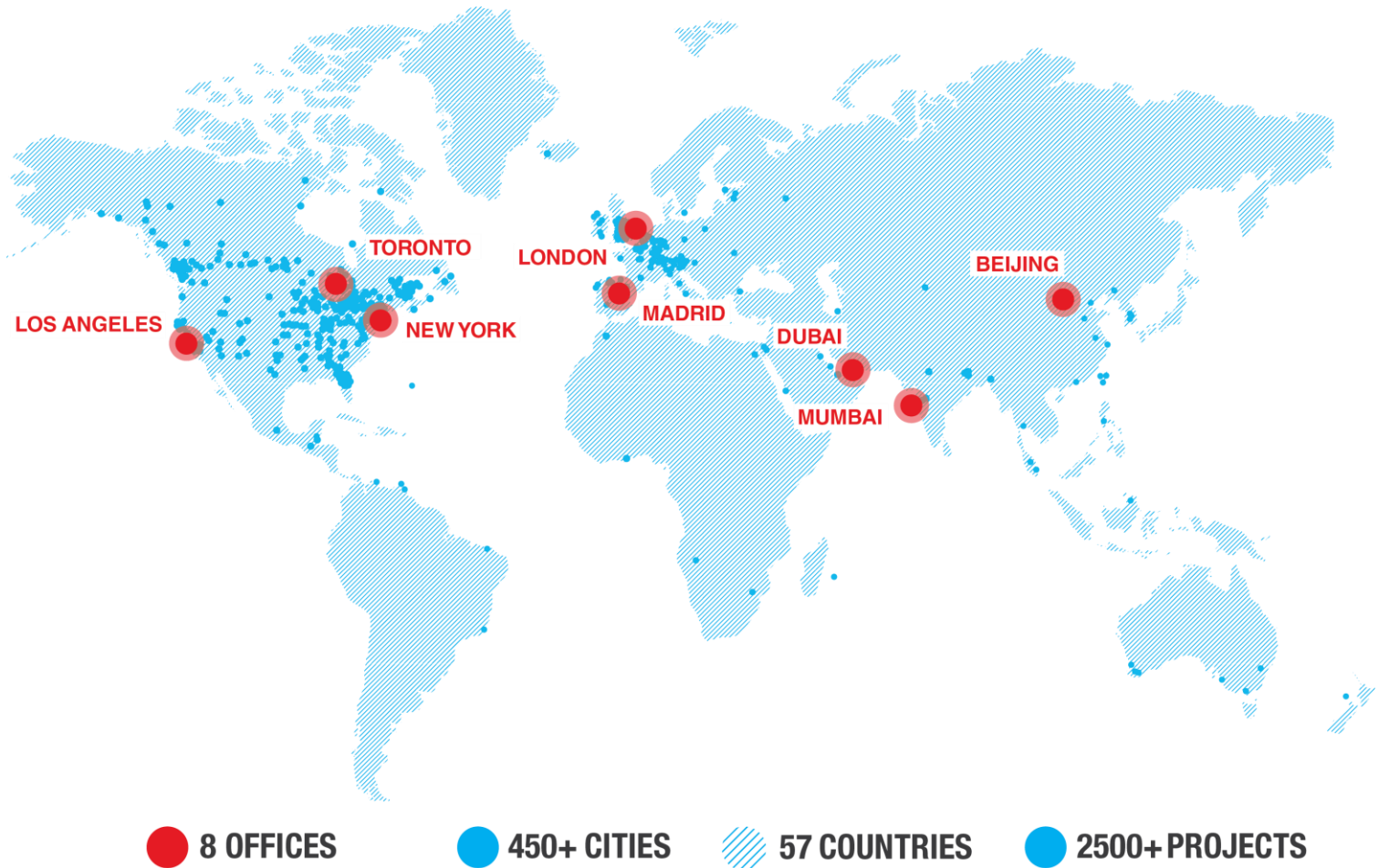
1. Welcome & Introductions
2. What is a Typical Architectural Master Plan
3. Existing Site and Building Observations
4. Group Discussion
5. Facilities: Moving Forward
6. Prioritization Exercise
7. Group Discussion
8. Final Thoughts

# Welcome and Introductions



# LORD CULTURAL RESOURCES

Founded in 1981 in response to an emerging need for specialized planning services in the museum, cultural and heritage sectors, Lord is the **world's largest cultural professional practice.**



# FACILITATION TEAM



**Kathleen Brown**  
Project Lead



**Sean Stanwick**  
Director Facilities  
Planning



**Natalie Maclean**  
Consultant

# ZOOM REMINDERS

- This presentation is being recorded; please keep yourself on mute
- During discussions: 'raise your hand' via the participants tab or respond using the chat function
- Any additional feedback, comments, or questions please email [\*\*sstanwick@lord.ca\*\*](mailto:sstanwick@lord.ca)
- Questions can be also asked in the discussions sessions

# Purpose of Today's Discussion

1. To present basic concepts regarding facility master planning.
2. To discuss specific museum improvement projects that have either started or will begin in the next few years.
3. Encourage participants to weigh in regarding the projects that most excite them, how they would rank or prioritize them, and why.
4. Help create a shared vision for the future of the facility.



# Architectural Facility Master Planning

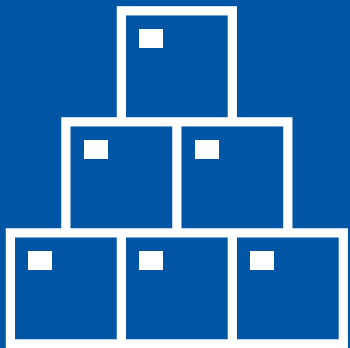


# What is a Facility Master Plan?



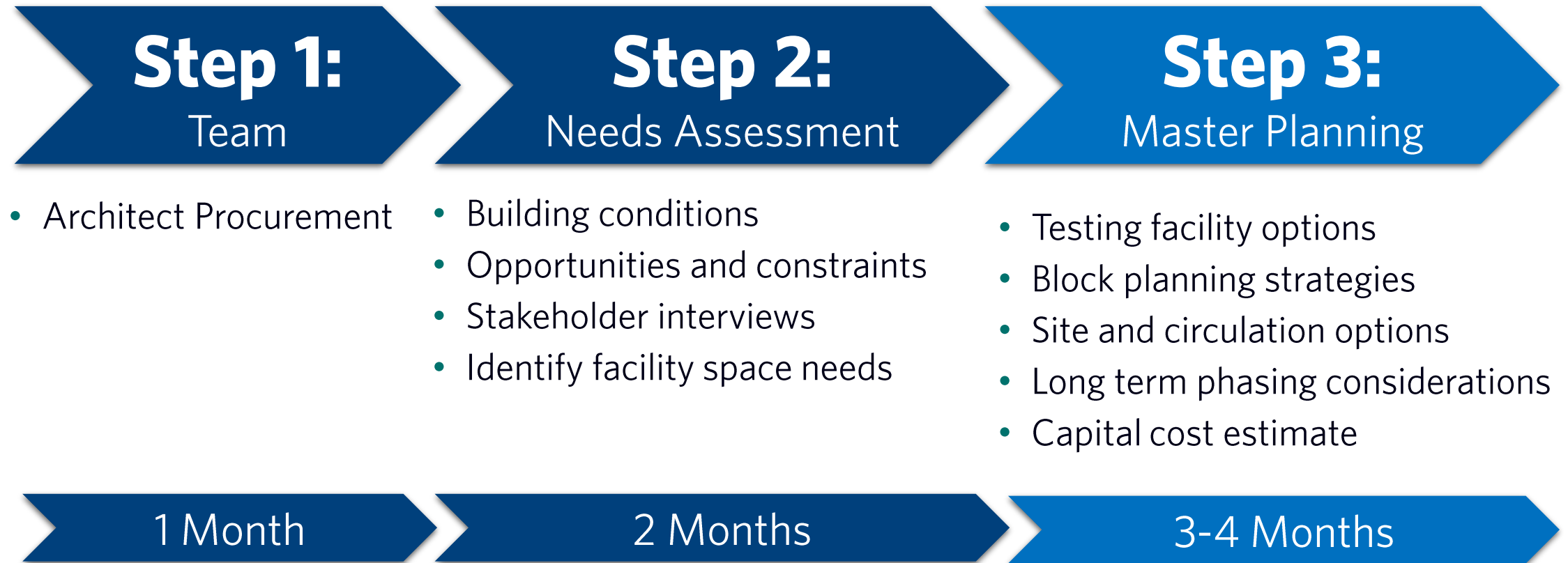
1. A long-term planning strategy that provides a conceptual roadmap to guide future growth and development.
2. It is about making the connection between buildings, social settings, and their surrounding environments.
3. Often the foundation documents for a pre-design capital or fundraising campaign.
4. It is NOT building design.

# Typical Contents

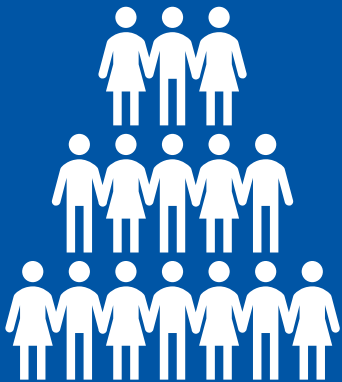


1. Project Goals and Priorities
2. Itemized Space Needs
3. Block Floor Plans
4. Site / Parking / Landscape Plan
5. Conceptual Renderings
6. Phasing Strategy
7. Project Schedule
8. Capital Cost Estimate

# TYPICAL SCHEDULE



# Who are the Key Players and Partners?



## Team

- Planning Committee / Boards
- Architect / Landscape Architect
- Specialists (Museum, S, M, E, Traffic)
- Cost Consultant

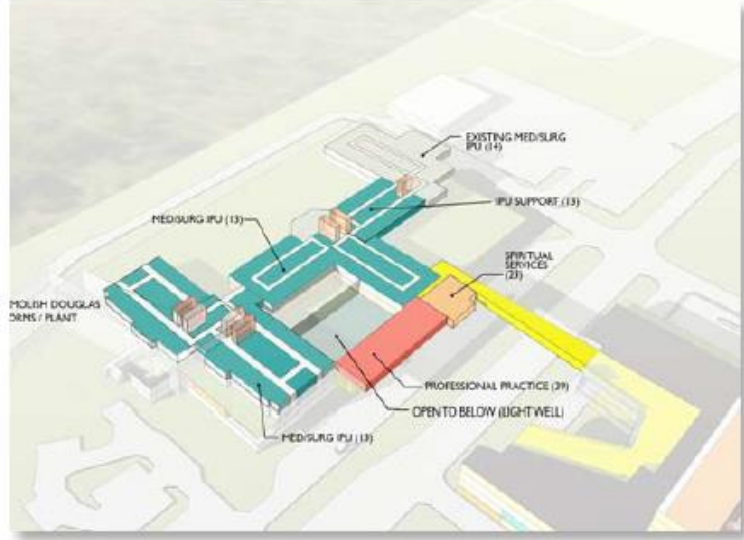
## Stakeholders

- Explora
- Sawmill Market / Hotel Chaco
- Albuquerque City Museum
- Bureau of Land Management
- City Department of Cultural Affairs

# Master Plan Examples



# Master Plan Examples



# Questions

A blue-tinted photograph of a museum gallery. In the foreground, a man in a patterned sweater and a cap is riding a silver Segway. To his left, a woman in a dark t-shirt stands with her arms crossed. To his right, another man in a dark t-shirt stands with his hands behind his back, looking at a display case. The gallery features various exhibits, including a large dinosaur skeleton in the background, a pterosaur model flying in the air, and several informational panels and display cases. The ceiling has recessed lighting, and the walls are white with some dark panels. The overall atmosphere is educational and interactive.

# Existing Site and Building





# Site

Exhibit and Design Production Complex

Dynatheater

Collections Facility

Planetarium

Main Entry

Albuquerque Museum

Tiguex Park

Mountain Road

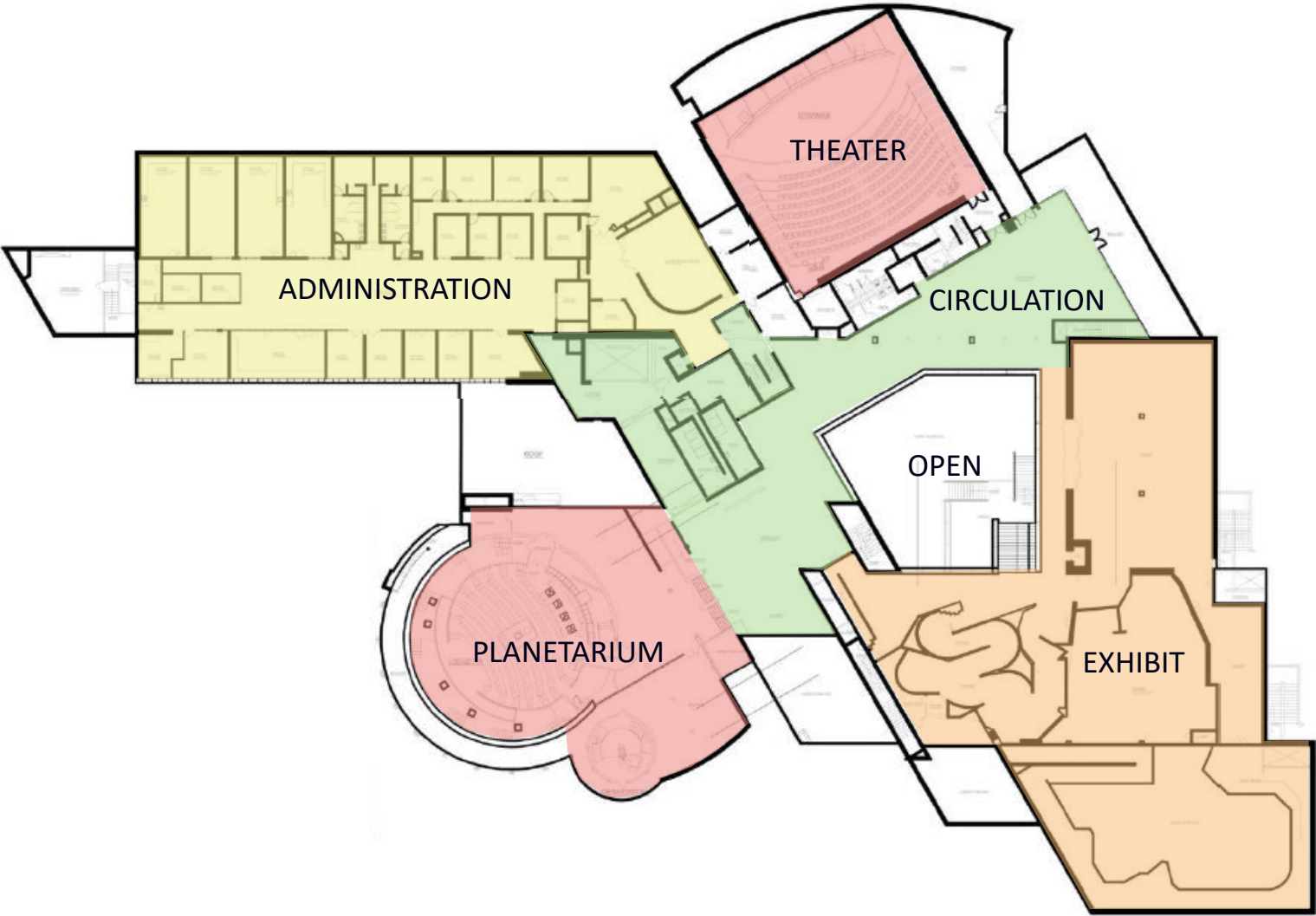
18th Street NW

Explora

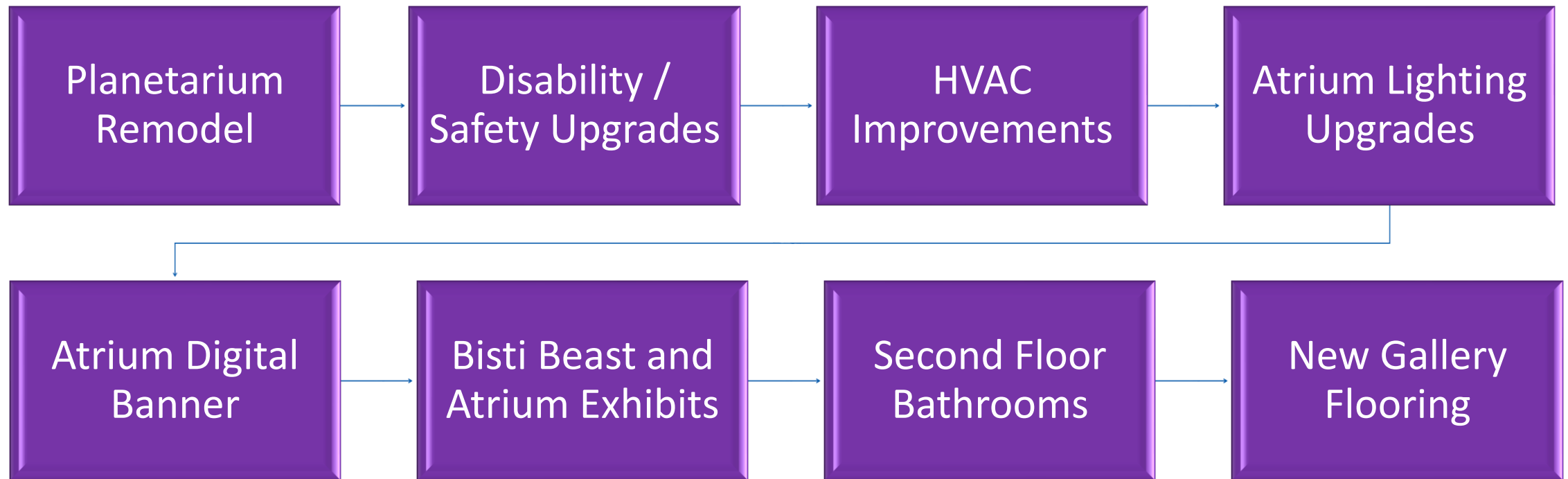
# Floor Plan-Level 1



# Floor Plan-Level 2



# Projects Completed to Date



# Facility Observations

## STRENGTHS

- Internal space available for renovations
- Storage site enables expansion and phasing
- Non-dependent renovation projects
- Education wing

## WEAKNESSES

- Entry sequence post-COVID
- Limited expansion opportunity on site
- Overall circulation and wayfinding
- Outdated exhibits and experiences

# Facility Observations

## STRENGTHS

- Internal space available for renovations
- Storage site enables expansion and phasing
- Non-dependent renovation projects
- Education wing

## WEAKNESSES

- Entry sequence post-COVID
- Limited expansion opportunity on site
- Overall circulation and wayfinding
- Outdated exhibits and experiences

## OPPORTUNITIES

- Increased access to the collections
- Planetarium and Science Wing
- Naturalist Center
- Sandia Mountain Natural History Center

## CHALLENGES

- Temporary Exhibition Space
- Collection safety
- Capacity for collection growth
- Disconnect from long-term campus planning

# Discussion: Observations and Impressions



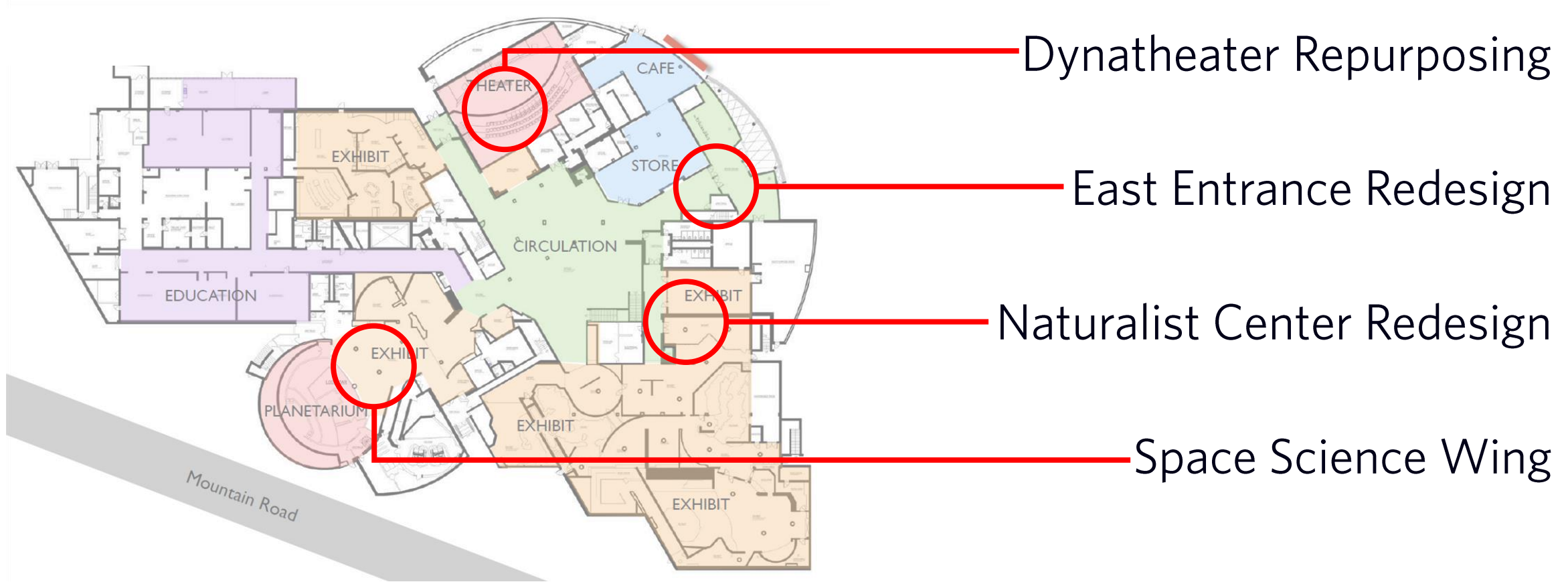
# Facilities: Moving Forward

and  
—depe  
The citric  
can run in tw  
ours, it runs on  
cycle or the Krebs  
early Earth, it runs in  
reductive citric acid cycle  
to use this version.

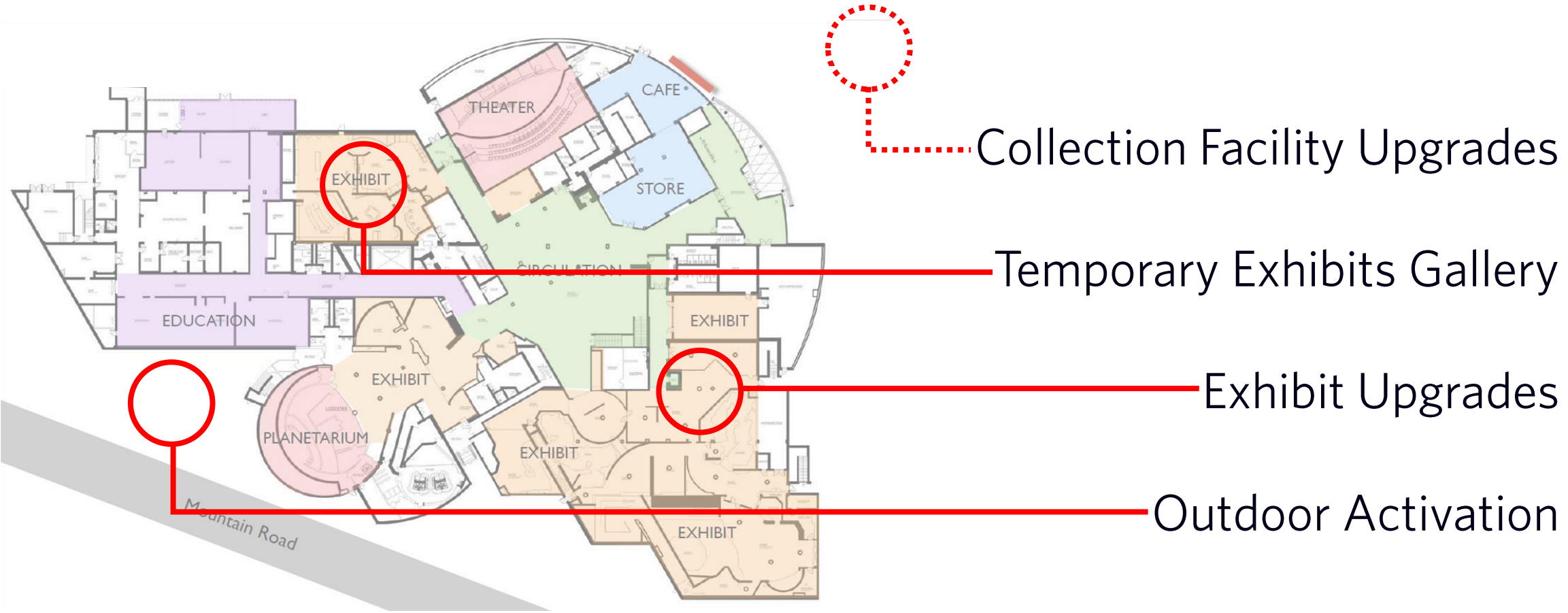
The suspicion is that  
primordial—that ex  
from it. In short  
the bridge br



# Future Projects for Consideration



# Future Projects for Consideration



# Zoom Poll: Prioritization Exercise



Please choose your **top three** planning projects in terms of immediate priority?

1. Dynatheater Repurposing
2. East Entrance Redesign
3. Naturalist Center Redesign
4. Space Science Wing
5. Collection Facility Upgrades
6. Temporary Exhibits Gallery
7. Exhibit Upgrades
8. Outdoor Activation

A photograph of a museum exhibit with a dark, reflective surface. Several hands are placed on the surface, some appearing to be part of a larger figure or object. The scene is overlaid with a semi-transparent orange filter. Text is visible on the exhibit, including a circular label with the word "ulism" and a larger informational panel on the right.

# Group Discussion: Observations and Impressions

and  
—dep  
The citric  
can run in tw  
ours, it runs on  
cycle or the Krebs  
early Earth, it runs in  
reductive citric acid cycle  
to use this version.

The suspicion is that  
primordial—that ex  
from it. In short  
the bridge br

# Final Thoughts?



# Thank You

[www.lord.ca](http://www.lord.ca)



**Cultural News**

A curated monthly review of what's happening in culture. **Sign up at [www.lord.ca](http://www.lord.ca)**